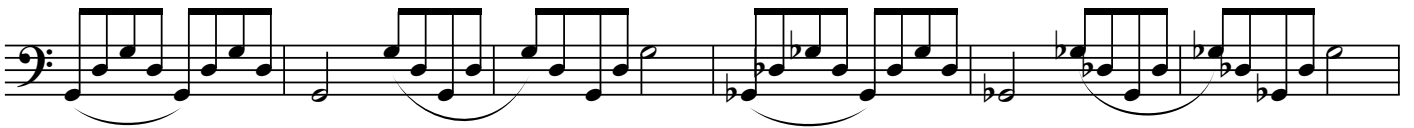
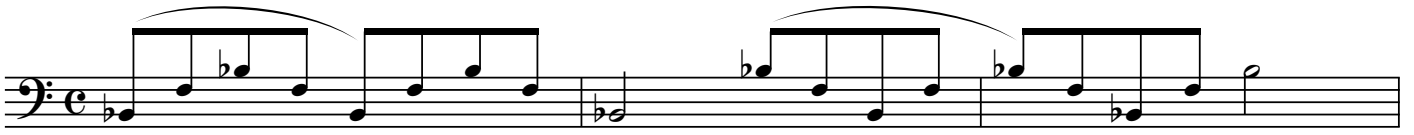


Arpèges



Arpèges

This page of musical notation, titled "Arpèges", contains ten staves of music in bass clef. The first three staves feature a sequence of arpeggiated chords, each marked with a triplet of "3" above and below the notes. The first staff is in a key with two flats (B-flat major or D-flat minor). The second staff continues this pattern. The third staff introduces a key signature with one flat (F major or D minor). The remaining seven staves consist of more complex arpeggiated patterns, including sixteenth-note runs and chords, with various accidentals and phrasing slurs. The notation is clean and professional, typical of a music manuscript.

