

Les quatre gammes

Sol mineur

Musical notation for the Sol mineur scale in bass clef, 6/8 time signature. The scale is written across eight staves, showing ascending and descending patterns with slurs and ties.

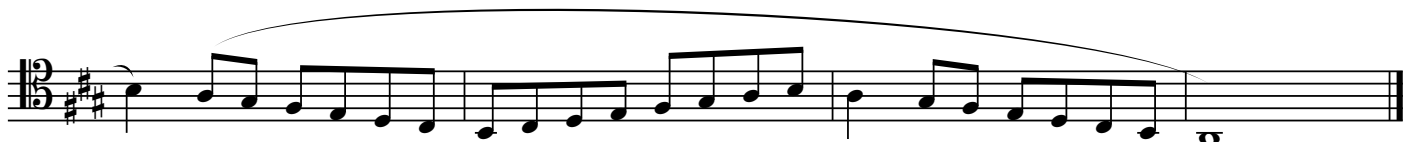
Lab Majeur

Musical notation for the Lab Majeur scale in bass clef, 6/8 time signature. The scale is written across three staves, showing ascending and descending patterns with slurs and ties.

The first four lines of the musical score are in 3/8 time and the key of B-flat major (two flats). The first line contains the beginning of the scale, starting with a quarter rest followed by a quarter note B-flat. The second and third lines feature eighth-note runs with slurs. The fourth line concludes the scale with a quarter rest and a fermata over the final note.

La Majeur

The 'La Majeur' section is in 3/8 time and the key of D major (two sharps). It consists of five lines of music. The first line begins with a quarter rest followed by a quarter note D. The second and third lines contain eighth-note runs with slurs. The fourth line ends with a quarter rest and a fermata. The fifth line continues the eighth-note runs with slurs.



Sib Majeur

